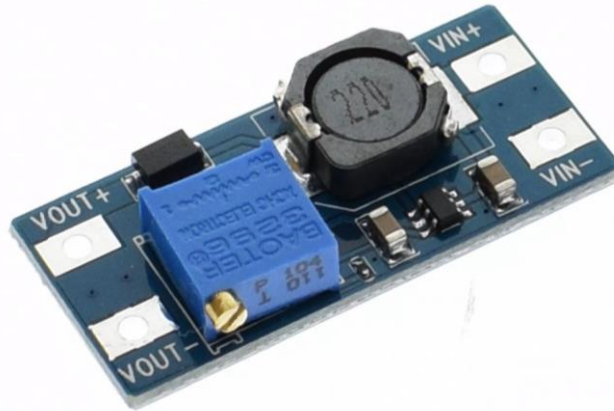


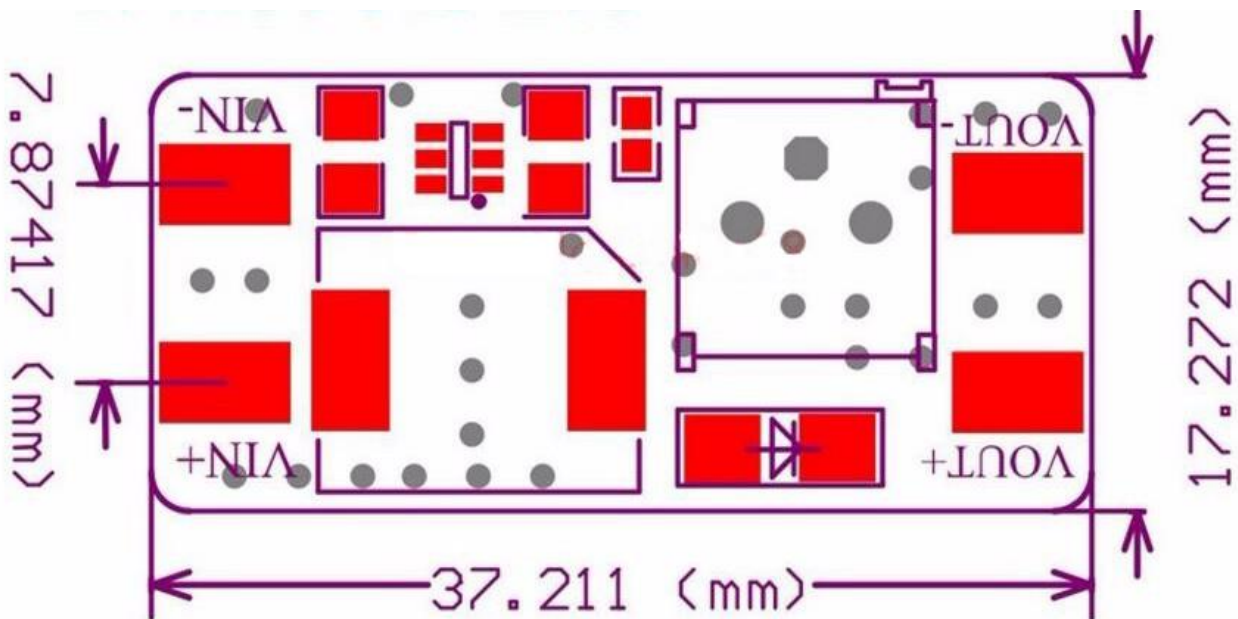
MT3608 2A Max DC-DC Step Up Power Module Booster Power Module



Features:

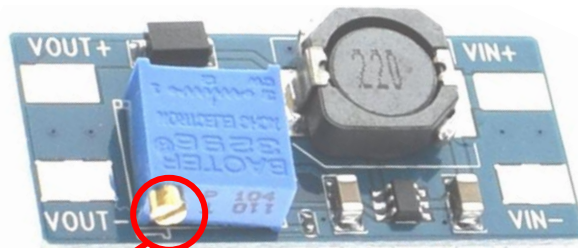
1. Maximum output current: 2A
2. Input voltage: 2 v - 24 v
3. Maximum output voltage:> 5V-28 v
4. Efficiency:> 93%

Size:



Note:

1. Input voltage should not exceed the maximum input voltage
2. Peak current output current does not exceed 2A
3. When the module output voltage can not be adjusted, always equal to the input voltage when the first 20 laps counterclockwise rotary potentiometer or more, then you can use the module properly regulate the voltage. Surge mode: potentiometer face chest, counterclockwise turn boost!

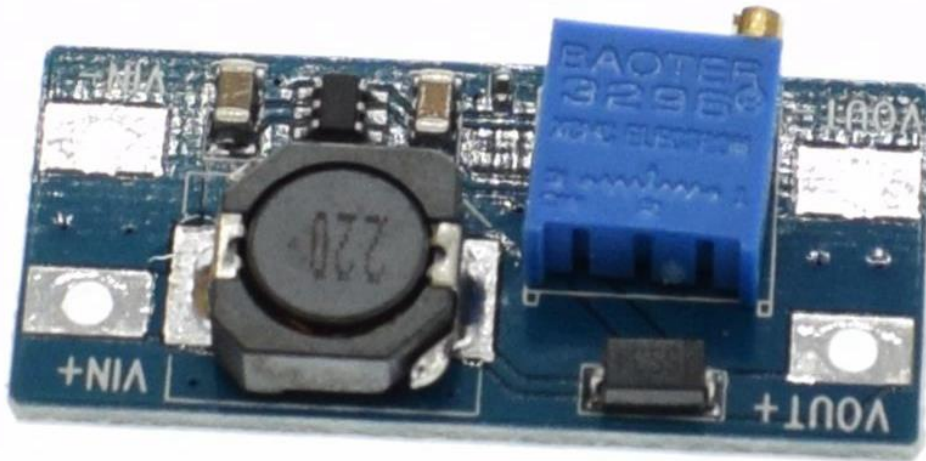


Adjustable potentiometer to change the voltage:
Counter-clockwise boost,
clockwise buck

(When the module output voltage can not be adjusted, the output voltage is always equal to the input voltage. Please adjust the potentiometer counterclockwise 20 laps or more. (Let potentiometer against your chest, counterclockwise turn boost))



Keep the differential pressure
(VOUT-VIN) at 3V or above



Product model	MT3608 2A (DC – DC) adjustable step-up module
The input voltage	2V-24V
The output voltage	5V-28V
The output current	2A (MAX)
Conversion efficiency	<96%
Switching frequency	1.2MHz
The output ripple	<100mV
Load Regulation	±0.5%
Voltage regulation factor	±0.5%
Working temperature	-45°C ~ +85°C
The size	37.2mm *17.2mm * 14.0mm (L*W*H)
Weight	5g

